



PURIFIED PROTEINS & REAGENTS • CUSTOM ANTIBODIES • BSA • CELL CULTURE MEDIA • OMNI C3® CELL CULTURE BAGS • ANIMAL & HUMAN BLOOD PRODUCTS



2020

Introduction to LAMPIRE

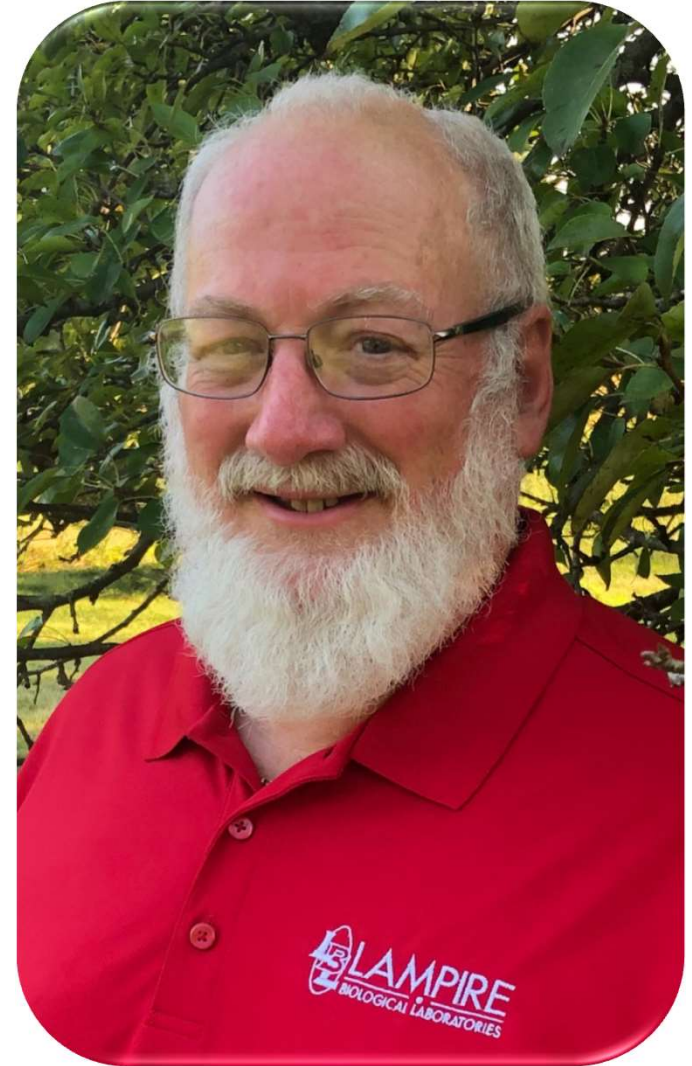


LAMPIRE is a privately held, international, life science company that produces biological reagents and raw materials that are shipped worldwide and used across many applications.

- Diagnostics
- Pharmaceuticals
- Biotechnology
- Cosmetics

President, Gregory F. Krug, and his family of employees, have built LAMPIRE into the company it is today. LAMPIRE is comprised of multiple farming campuses and three state-of-the-art laboratory facilities, strategically located across the state of Pennsylvania.

Encompassing over 600 acres, LAMPIRE houses over 5,000 animals, representing over 20 unique species. LAMPIRE has over 140 experienced technical and animal husbandry technicians manufacturing our products and services under the guidelines of ISO and AAALAC.



Gregory F. Krug, President

Positively impacting human and animal health around the world for over 40 years!

What does LAMPIRE do?

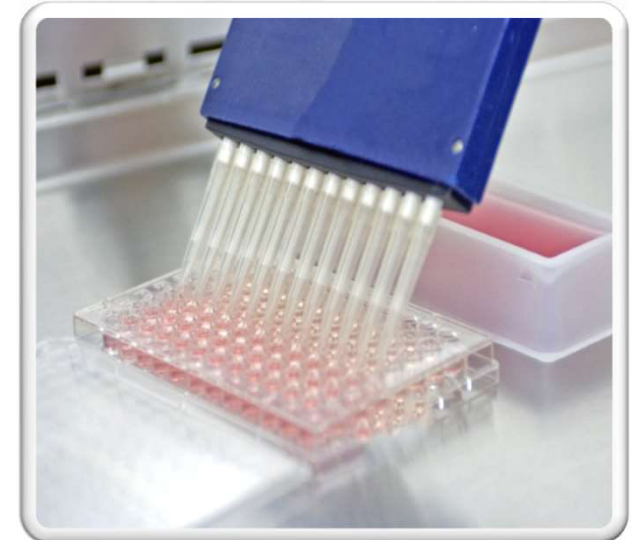
Blood & Biological Products

- Donor Animal Blood Products and Purified Serum Proteins
- Human Blood Products and Purified Serum Proteins
- Abattoir Blood Products, Organs, and Tissues



Custom Antibodies

- Project Design, Immunogen Design & Scopes
- Polyclonal Antibody Development and Production
- Monoclonal Antibody Development and Production



Worldwide Expertise

Global Partner

LAMPIRE has dedicated personnel to oversee your shipment

Helping to determine the correct paperwork for your product; research sample or production material

Routinely shipping to the UK, EU, Asia

Timely delivery of your biological raw material needs is our primary focus!



Order

International Paperwork

- Picking Slip
- Commercial Invoice
- Health Certificate

Shipment Prep

- Package with Label
- International Paperwork
- ITN (If necessary)
- Product

Release

- Pre-Alert
- Release Cargo

Monitor package

- From customs to your site

World Class Specialized Facilities



Everett Bioprocessing Lab

- 18,000 sq. ft. state-of-the-art laboratory
- Customized Immunochemistry services
- Tissue processing, blood products



Coopersburg Laboratory

- 5,000 sq. ft. facility
- Processing of blood products
- Specialty organ/tissue processing



Ottsville 40 Acre Pharm Facility & Corporate Headquarters

- Small & Large animal facilities and processing labs
- Customer service, technical support and client services



Everett 600 Acre Pharm Facility

- Over 32 unique animal vivariums and housing structures
- Featuring over 20 different species of animals available for production and project needs
- Custom antisera, donor sera, and red cell production programs

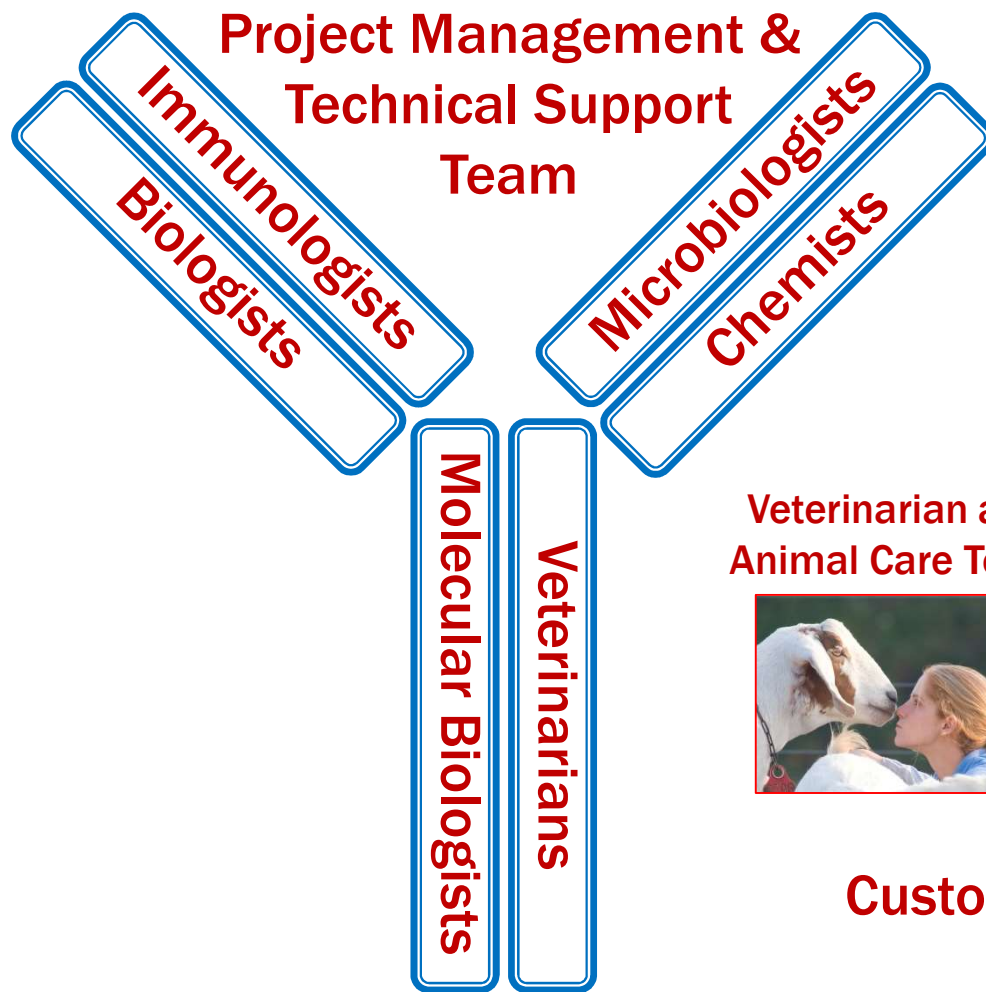
Biotech Research & Resource Center

- 18,000 sq. ft. facility
- Certified class 2, 5 and 7 rooms/hoods, cell banking plus tissue culture and purification labs
- Monoclonal Antibody Production
- Hybridoma Development
- Customized Immunochemistry services
- Contract Manufacturing
- High-Tech Full Service Vivarium



We have the capabilities to increase housing for our more than 20 different species of animals including donkeys, llamas, etc. These capabilities allow for continuity of supply and adaptability to our clients' forecasts.

Customer Focused: Technical Experts



The foundation of our growth and our client's success is our expert personnel. Comprised of over 140 professionals with a wide array of backgrounds. Our experienced and customer service-oriented teams are what sets LAMPIRE apart from others. As experts in their respective fields they effectively allow LAMPIRE to exceed all needs and expectations of our clients.

Veterinarian and Animal Care Team



Manufacturing and Production Team



Quality Assurance Team



Customer Service/Project Management



- Conscientious and approachable
- Tech savvy cross-trained team
- Resolution driven
- Real-time troubleshooting

- Custom specification pros
- Rapid turnaround of deliverables
- Small pilot to large production
- Diverse project experience

Quality is LAMPIRE's First Priority

Our Quality Policy

To provide consistently and competitively, high quality reliable products and services in conformity with our customer's requirements, specifications and standards.



• ISO 13485:2016



• 001032



• 2550014 (Medical Device & Blood Establishment)



• 23-R-0122, 23-B-0020



• A3997-01



• PA-TEC-0001 • PA-INT-0004
• PA-TEC-0002 • PA-TEC-0005
• PA-TEC-0003



• Certified Technicians



March 10, 2008

Gregory F. Krug, B.S.
President
Lampire Biological Labor
P.O. Box 270
Pipersville, PA 18947

Dear Mr. Krug:

REMARKABLE

The Council commends your use. Especially noteworthy of the highest quality; the maintained impeccably; 1 roosters; the exemplary monoclonal antibody procedures employees of the company standards as set forth by ACCREDITATION shall

Council has no further recommendations forward to following your AAALAC International re AAALAC International occur. Please note that, a verifying that your animal

Sincerely,

Kathy E. Laber
Kathy E. Laber, D.V.M.,
President, Council on Accreditation

KEL:cmw
001032

cc: Andy Chizmadia
Jerrald Novak, A
Irving W. McCor



March 8, 2011

Gregory F. Krug, B.S.
President
Lampire Biological Laborator
P.O. Box 270
Pipersville, PA 18947

Dear Mr. Krug:

The Council on Accreditation in animal care and use. The Council commends your investments in renovations and operations 24 hours after a de collection; determination of ventilation features in new and accurate; the robust environmental disaster plan, which included documented training program. International standards as set FULL ACCREDITATION shall

Council acknowledges your concerns expressed by the site providing periodic medical evaluations include a risk assessment of providing uniforms and launch to hazardous aerosols; conditions are excessive; expanding enrichment devices; and evaluate

Council has no further recommendations look forward to following your

AAALAC International requires an interim, AAALAC International concerns should they occur. separate letter simply verifying electronic copy of this letter

Sincerely,

Dorcas P. O'Rourke
Dorcas P. O'Rourke, D.V.M.,
President, Council on Accreditation

DPO:cmw
001032

Association for Assessment and Accreditation
of Laboratory Animal Care International
5283 Corporate Drive, Suite 203



March 24, 2017

Gregory F. Krug, B.S.
President and Institutional Official
Lampire Biological Laboratories, Inc.
P.O. Box 270
Pipersville, PA 18947

Dear Mr. Krug:

The AAALAC International Council on Accreditation has reviewed the report of the recent site visit to Lampire Biological Laboratories, Inc., Pipersville, Pennsylvania. The Council commends you and the staff for providing and maintaining an excellent program of laboratory animal care and use. Especially noteworthy were the conscientious and knowledgeable staff at all animal facility locations and their proficiency in completing procedures with minimal distress to the animals; the strong institutional commitment, evidenced in part by the new infrastructure, ISO certification, hiring of an additional full-time veterinarian, the engaged senior management, and the sustained community outreach efforts; the well maintained high level of sanitation; the active and engaged Institutional Animal Care and Use Committee; the non-affiliated member and the detailed semiannual medical records for all species and thorough documentation of staff training; and the ongoing development of the environmental enrichment program and the provision of retirement for animals. The Council is pleased to inform you that the program conforms with AAALAC International standards as set forth by the Guide for the Care and Use of Laboratory Animals, 8th Edition, 2011 and the Guide for the Care and Use of Agricultural Animals in Research and Teaching, 2nd Edition, 2015. Therefore, FULL ACCREDITATION shall continue.

Council acknowledges receipt of the correspondence dated November 22, 2016 detailing actions taken relative to concerns expressed by the site visitors during the exit briefing. Specifically, the items addressed satisfactorily included: implementing ongoing occupational health risk assessments for employees and the non-affiliated IACUC member; intensifying local safety risk assessments for operations and tasks; addressing environment and housing management concerns, including unobstructed aisles; and initiating IACUC oversight of non-pharmaceutical-grade

Council has no further recommendations look forward to following your

AAALAC International requires an Annual Report detailing changes made during the year in accredited units. In the interim, AAALAC International expects to be apprised in a timely manner of significant programmatic changes or concerns should they occur. Please note that, at your request, AAALAC International will provide your institution with a separate letter simply verifying that your animal care and use program is accredited. Should you also wish to distribute an electronic copy of this letter to program staff, a Portable Document Format (pdf) version will be sent upon request.

Sincerely,

Andrew W. Grady
Andrew W. Grady, D.V.M., M.S.
Council President-Pro Tem

AWO:cmw
001032

5205 Chestnut Court, Suite 300
Federick, MD USA 21702

CONSCIENTIOUS and KNOWLEDGEABLE

EXCELLENT

COMMITMENT

FULL ACCREDITATION

Our cGMP compliant Quality Management System drives our production processes and customer services to ensure consistent, high-level performance.

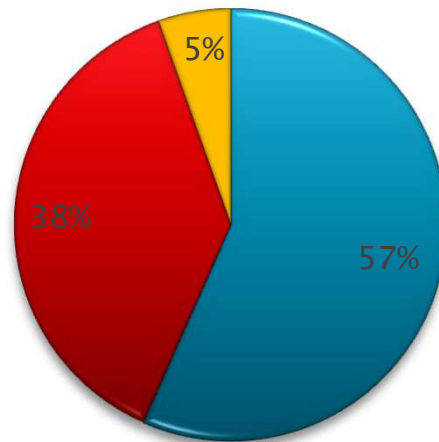


What's Trending @ LAMPIRE

FAST FACT

Over 75% of orders are customized to meet client specifications

Products vs Services



■ Products ■ Services ■ Other

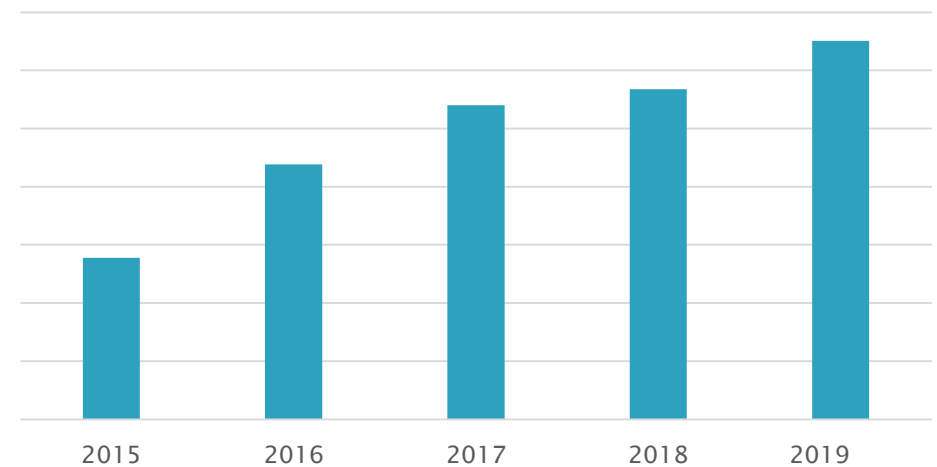
FAST FACT



>20 Unique Species

Animal Whole Blood, Serum & Plasma

Total Sales – 5 Year Trend



FAST FACT

>99% Quality & On-Time Delivery Rating*

*Based on scorecards from top 500 life science companies

Products @ LAMPIRE

Blood & Biological Products

- Donor Animal Blood Products and Purified Serum Proteins
- Human Blood Products and Purified Serum Proteins
- Abattoir Blood Products, Organs, and Tissues



Purified Proteins & Related Reagents

- BSA; Domestic and New Zealand Sourced
- Primary Antibodies
- Secondary Antibodies
- Antibodies to Drugs of Abuse
- Purified Immunoglobulins and Conjugates



Specialized Products and Services

- OMNI C3® Cell Culture Bags
- Custom Cell Culture Media
- Assay Development
- Contract Manufacturing
- Collaborative Research
- Pharmacokinetic Studies



Animal Donor Whole Blood @ LAMPIRE



Animal Donor Whole Blood:

- Large Variety of Host Species
- Off-Site Collection Available
- Abattoir and Managed Herds
- Custom Collections
- Numerous Anticoagulants
- Pooled and Individual Lots
- Gender Specific Lots
- Domestic and Non-Domestic
- Bleed and Ship same day
- QC Tested Material

Over 20 Unique Species:

Alligator, Bovine, Calf, Chicken, Donkey, Emu, Goat, Goose, Guinea Pig, Hamster, Horse, Llama, Mouse, Primate, Porcine, Rabbit, Rat, Rooster, Sheep, Trout, Turkey (Other species available, please inquire)



Applications:

- Specific Donor & Species Material for Medical Research
- Custom Managed Herds for Specific Research Applications
- Application Specific Engineering for Medical Device
- Hematology & Coagulation Controls



Abattoir Materials @ LAMPIRE



Abattoir Derived Products:

- Experienced LAMPIRE Technicians Collect, Prepare & Process Animal Blood, Glands, Organs & Tissues
- Close Proximity to Major Calf, Chicken, Bovine, Porcine & Ovine Abattoir Facilities
- Established Working Relationships with Abattoir Facilities
- Fully Documented and Recorded Collection Processes
- EU Abattoir Registered for Ease of Shipment to the EU
- Maintain High-Level of Traceability, High-Quality & Consistency
- Large & Small Collections, Bulk & Research Size
- Competitively Priced, Alternative to Donor Material
- Diverse Collection of Species Available
- Collected Fresh, Processed per Specifications
- Attention to Detail for Critical Collection Process

Preparations:

- Extraction & Storage
- Media Perfusion
- Snap Frozen
- Slide Preparation
- Lyophilized
- Custom Processing

Applications:

- Medical Device/Equipment Testing
- Assay & Diagnostics Research
- Hematology & Coagulation Controls
- Study of Cells for Hematology Research

BSA @ LAMPIRE



Bovine Serum Albumin (BSA)

LAMPIRE is rated as one of the top leading providers of BSA driving the Bovine Serum Albumin market. LAMPIRE offers a full complement of catalog BSA, available both in liquid and lyophilized.

With superior solubility and filterability, no endotoxin, enzyme or protease activity, LAMPIRE BSA is easy-to-use and ensures assay integrity, component stability and cell culture suitability. The closed loop manufacturing process minimizes contamination and maximizes reproducibility.

- High-Quality & Consistency
- Traceability
- Protease-free, IgG-free
- High-purity, Low Interference
- Superior Solubility & Filterability
- Customized Concentrations
- Available in Lyophilized & Liquid
- Bulk Sizes & Discounts Available



This combines our two high quality products and makes an easy-to-use blocking agent.

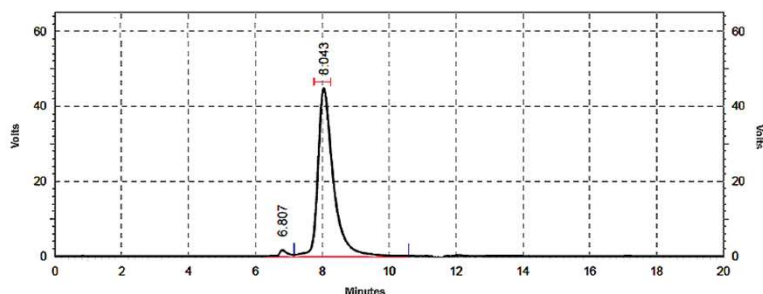
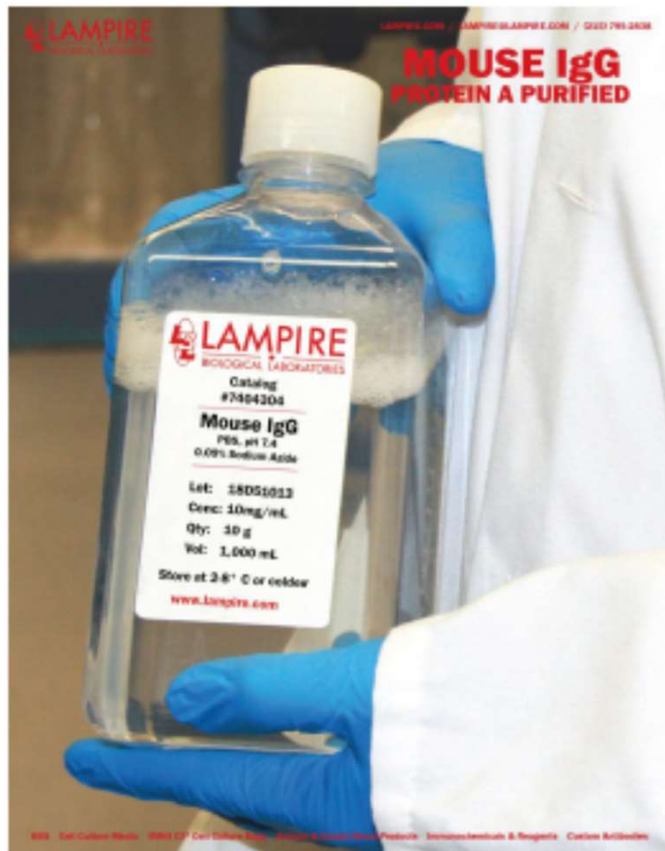
Applications:

Pharmaceutical and Tissue Engineering, Buffers, Blocking Solution for Assays, Immunoassays, Flow cytometry, Assay controls, Western Blot, ELISA

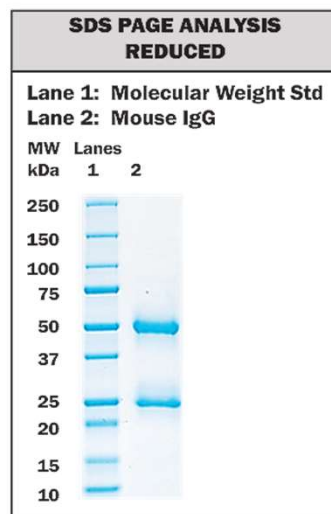
Mouse IgG Protein A Purified @ LAMPIRE

**High-Quality • Lot-to-Lot Consistency • Shipped Worldwide
Affordably Priced • Research & Bulk Quantities Available**

- Passive heterophilic blocker controlling false positives
- HAMA (human anti-mouse antibody) blocker in assays with mouse derived antibodies
- Prepare conjugates for immunoassays
- Immunogen to prepare anti-mouse IgG secondary antibodies and secondary antibody conjugates
- Negative control for flow cytometry, Western blotting, IHC, and immunoprecipitation applications
- Standard in assays to quantitate monoclonal production by ELISA
- Bead coatings to sort and separate cells
- All isotypes present IgG1, IgG2a, IgG2b and IgG3 in the purified product



HPLC Results				
PK #	Name	Retention Time	Area	Area Percent
1	Dimer	6.807	115838	1.97
2	IgG	8.043	5775498	98.03
Totals			5891336	100.00



Description: Serum was collected from normal healthy donor animals. Antibody was prepared using Protein A affinity chromatography.

Preservative: 0.09% Sodium Azide

Purity: ≥ 95 % (SDS PAGE and HPLC)

Buffer: 0.01M Sodium Phosphate, 0.15M NaCl (PBS), pH 7.4

Concentration: 10 mg/mL

Storage: 2-8°C (Extended: -10°C or colder)

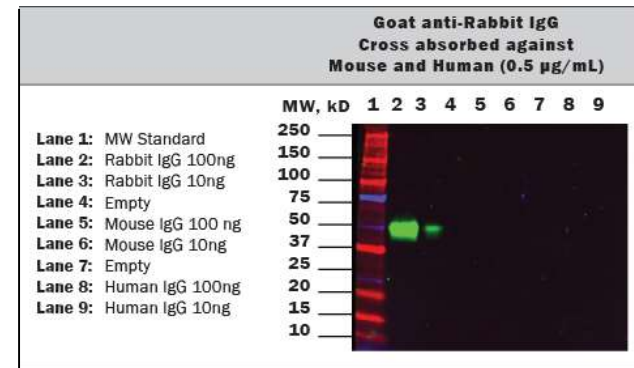
Package Sizes: 100 mg, 500 mg, 1 gram, 10 grams, Custom

Secondary Antibodies @ LAMPIRE



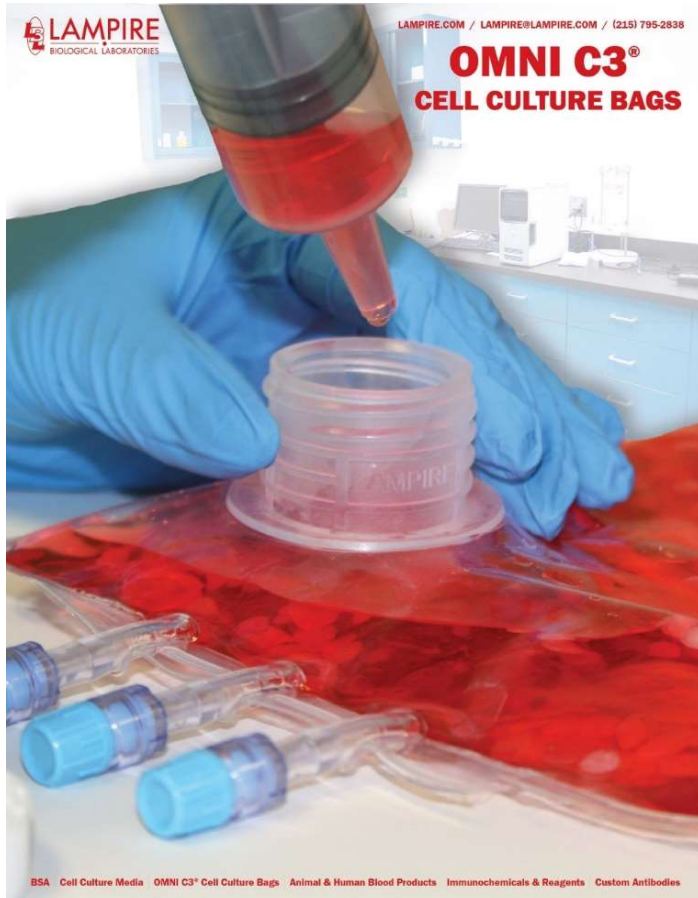
Secondaries from LAMPIRE: Antisera, Affinity Purified

- High purity & specificity
- Low cross-reactivity
- Customizable
- Manufactured in the USA
- Consistent quality standards
- In-house processing
- Wide range of species
- Designated donor animals
- Lot-to-lot consistency
- Custom conjugates & fragments
- Research & bulk packaging
- Shipped worldwide



Applications: Immunoassays, Flow cytometry, Assay controls, Western blot, ELISA

Omni C3 Cell Culture Bags @ LAMPIRE



Applications:

- Suspension Cells
- Hybridoma, CHO, HEK293
- Customizable Configurations
- Adherent Cells
- Anchorage Dependent Cells

Omni C3 Cell Culture Bags

LAMPIRE Omni C3 Cell Culture Bags are a simple, single-use device manufactured for the culture, harvest and storage of cells. Gas permeable, the Omni C3 Cell Culture Bag allows for the efficient transfer of gases, making it unnecessary for gassing the cultures. In addition, or in lieu of the screw cap fitment (which facilitates cell harvesting) the bags can be fitted with Luer-lock ports and/or needle ports for aseptic inoculation and sampling. These sterile connections minimize the opportunity for culture contamination.

- Cell Culture & Harvest
- Cryo-Storage
- Centrifugation
- Leak Tested
- Aseptic Inoculation
- Electron Beam Sterilized
- Efficient Transfer of Gases
- Customizable Configurations
- Reduced Biological Waste
- Connect for Production Scale-Up

Cell Culture Media @ LAMPIRE



Consistent, High-Quality, Customizable Tissue Culture Media & Reagents, OEM Labeling

Experience

25+ years of expertise formulating media

Collaboration

Personalized customization to optimize results

Custom Batch Sizes

Made-to-order volumes and batches

Reproducible

cGMP QMS ensures high quality and consistency

Solutions & Reagents

Standard formulations also available



Lobster Hemocyanin @ LAMPIRE



Lobster Hemocyanin (LLH) Novel Carrier Protein

Introducing a novel carrier protein for the preparation of highly effective immunogens. LLH (Lobster Hemocyanin) is a protein purified from the sustainable American lobster. This product is exclusively distributed by LAMPIRE as a lyophilized powder in phosphate buffer saline and is packaged as 20 mg/vial. Other package sizes, including bulk, available on request.

Research has shown:

- LLH is an effective carrier protein
- Low pre-existing immunity to LLH in rabbits
- Comparable antibody titers are elicited between LLH and KLH conjugated protein and peptide antigens
- Animals immunized with LLH conjugates do not produce cross-reacting antibodies to KLH
- The immune response to the LLH protein is less than that to KLH; enhancing response to the hapten
- LLH can be alternated in immunization protocols utilizing BSA, OVA, and KLH to reduce immunodominance of the carrier molecule



Manufactured in
collaboration with

Lobster Unlimited LLC

Contract Manufacturing @ LAMPIRE



Contract Manufacturing Services:

- Pilot batch through fill, tested, labeled, finished product stages
- Flexibility to accommodate a wide range of manufacturing needs; general lab environments, abattoir processing to certified class 2, 5 and 7 rooms/hoods.
- Impeccable track record of on-time delivery for over 15 years
- Contract manufacturing, packaging and kitting capabilities for all your needs.
- Specialized in complicated technical transfer projects

Applications:

- Antibody fills for diagnostic controls
- PCR controls; master mix, primers, positive controls, internal controls, buffers
- Raw material manufacturing for injectables
- Full kit assembly

Concept



Development & Manufacturing



Finished Product



High-Tech Vivarium

- Accreditations: AAALAC, EC No. 1069/2009 / EU No. 142/2011 , NIH-OLAW, USDA.
- 100% HEPA-filtered once-through fresh air
- “Clean-Dirty” corridor system
- Back-up generators and alarmed monitoring systems
- Monitoring of closed-circuit surveillance system on and off premises
- Use of Innovive IVC Rack System

Species Available:

- Mice
- Rats
- Hamsters
- Guinea Pigs
- Rabbits

Services Offered:

- Pharmacokinetic/ Drug Metabolism Studies
- Contract Breeding Development and Genotyping for GEMMs
- Xenograft Animal Models
- Monoclonal Antibody Development & Production
- Hybridoma Development
- Ascites Program
- Biorepository Storage
- Routinely Work With Immune Compromised Strains
- PBMC/Buffy Coat isolation, Splenectomy, Bone Marrow Harvest and RNA isolation



Services @ LAMPIRE

Custom Antibodies

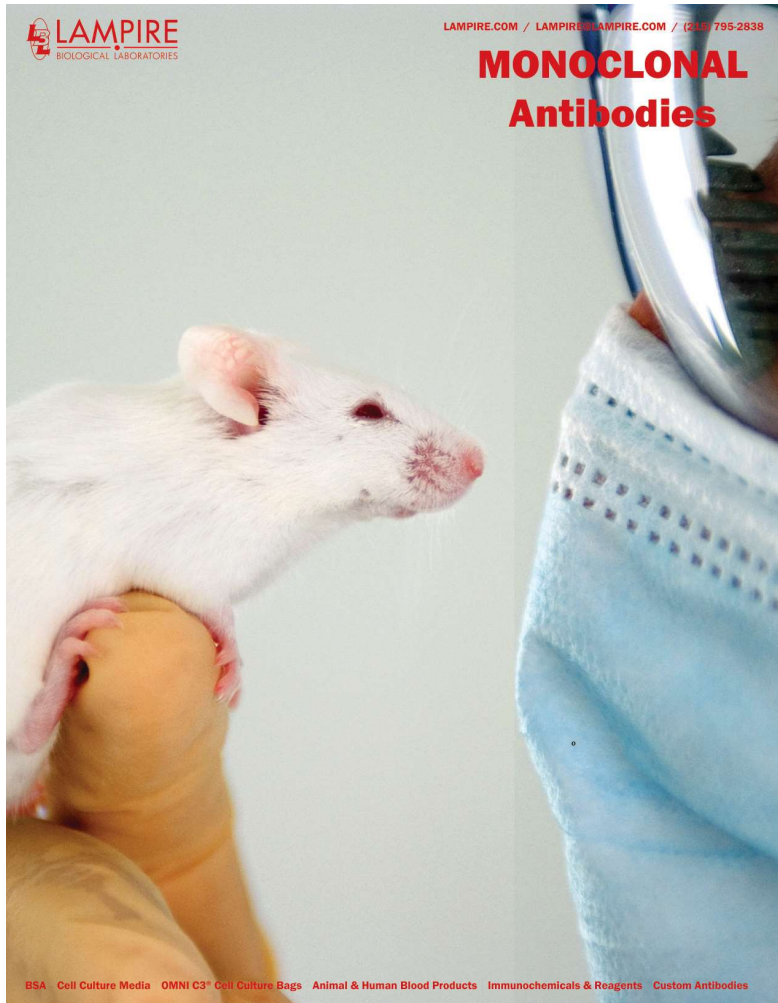
- Project Design, Immunogen Design & Scopes
- Polyclonal Antibody Development and Production
- Monoclonal Antibody Development and Production
 - Cell Line Optimization
 - Cell Bank Production
 - Cell Line Storage

Antibody Support & Immunochemistry Services

- Peptide Synthesis
 - Peptide Design and Identification Services
- Custom Antigen Preparation
- Antigen Conjugation
 - KLH, OVA, BSA, Lobster Hemocyanin (LLH), Biotin
- Titer and Avidity Monitoring
- Antibody Purification Services
 - Affinity, Protein A, Protein G, IgY Purification from Eggs, Egg Preservation
- QC Testing Services
 - ELISA, HPLC, QPA, IEP, Radial Immunodiffusion, SDS-Page, Western Blot, Cross-Reactivity, BCA Total Protein, Bradford Total Protein
- Protocol Services
 - PBMC/Buffy Coat isolation, Splenectomy, Bone Marrow Harvest, RNA isolation, Tattoo-Needle ID Immunizations, Popliteal Lymph Node Injections, Fab Fragmentation, Antigen Extraction from Gel Slices
- Antibody Tagging
 - Fluorescent, Gold Colloidal, BSA, BIOTIN, Alkaline Phosphatase



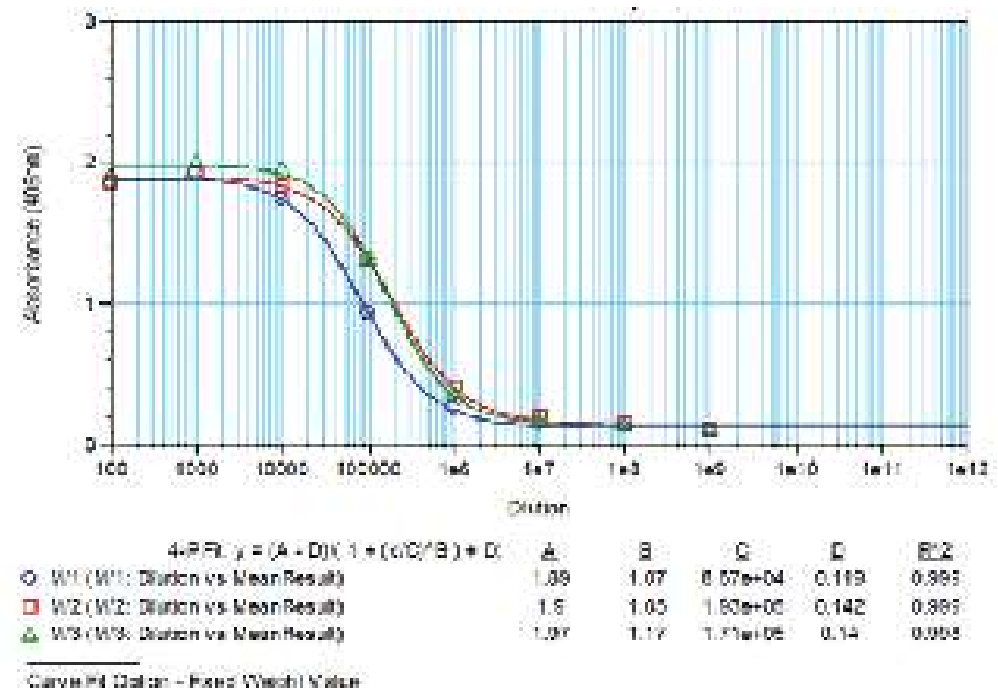
Custom Monoclonal Antibodies @ LAMPIRE



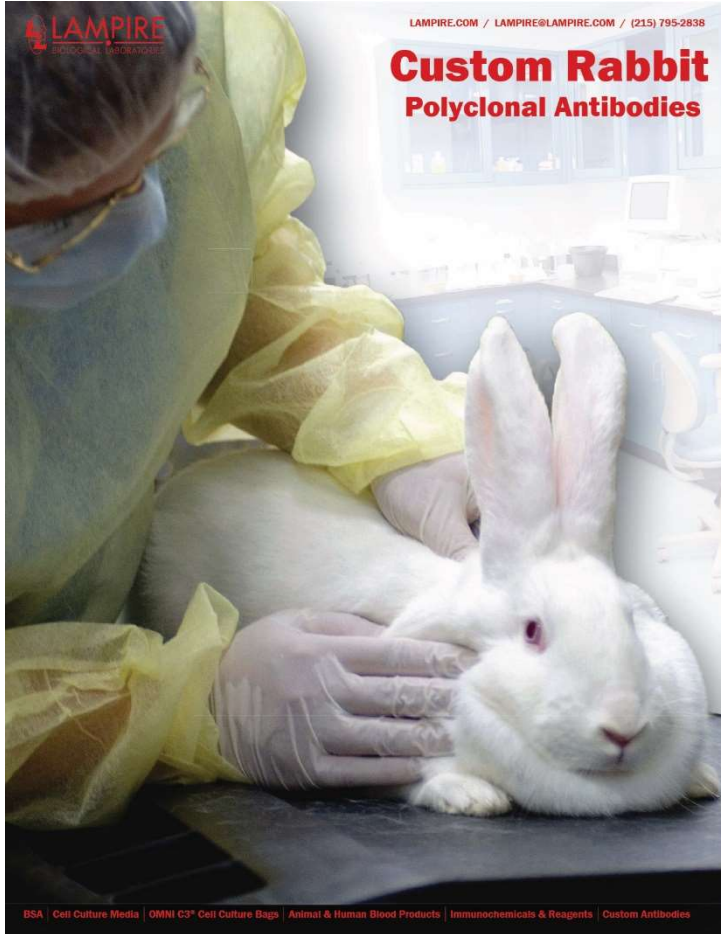
Single source supplier for antibody design, development, production, purification and storage. Our purification specialists ensure maximum yield & quality of your antibody, accommodating large scale production and multi-site storage of your cell lines.

Custom Monoclonal Antibodies

- Proven success rate across a broad range of immunogens (peptides, oligos, cell biomarkers, small drug molecules)
- Well developed and documented production protocols
- Monoclonal antibodies have the highest specificity and reproducibility
- State-of-the-art small animal vivarium with AAALAC Accreditation to ensure quality & animal welfare



Custom Polyclonal Antibodies @ LAMPIRE

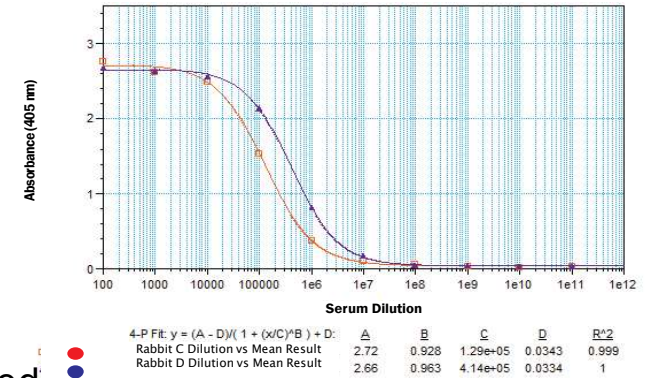


Custom Rabbit Polyclonal Antibodies

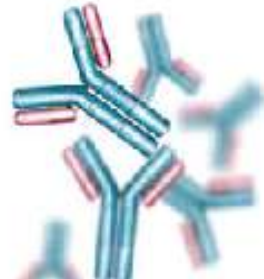
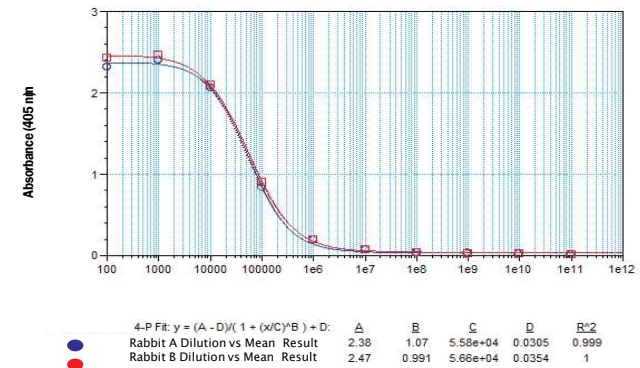
Custom Polyclonal Antibodies:

- High success rate across a broad range of immunogens
- Considerable phylogenetic distance from most animal research models
- Excellent response to human immunogens and haptens
- Well-developed and documented production protocols
- Rabbits generate high affinity antibodies
- AAALAC Accreditation to ensure quality & animal welfare
- **Not just rabbits:** LAMPIRE has over 20 species available

Two Years Plus - Quality Titer Response for Long-Term Production



Fast, Quality Titer Response in 30 Days



Design & Preparation

Immunize Animal with Antigen

Animal Makes Antibodies

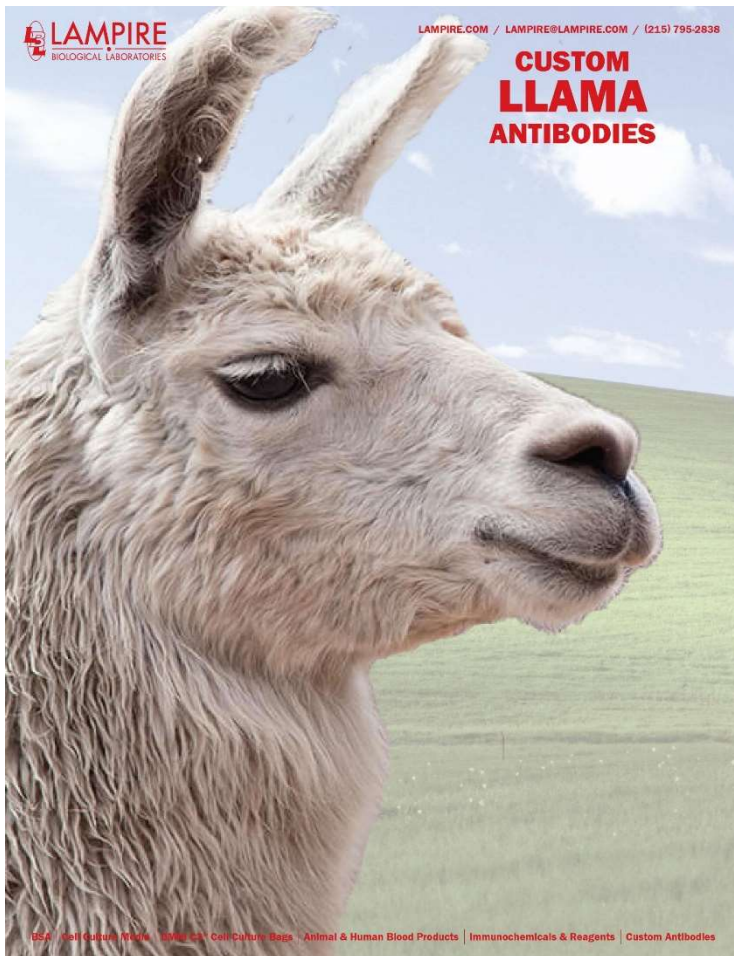
Bleed the Animal

Remove Blood Cells & Collect Antibodies

aaalac
INTERNATIONAL
Accredited

LAMPIRE
BIOLOGICAL LABORATORIES

Llamas @ LAMPIRE



Llama Antibodies

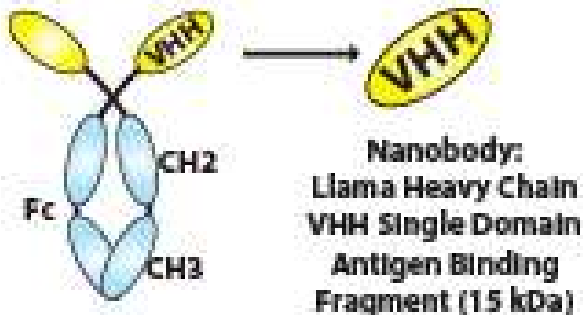
- Unique heavy chain only antibodies
- Antibodies bind to epitopes that are inaccessible to traditional antibodies (enzyme active sites, clefts in membrane proteins)
- Longer shelf life, higher tolerance to conditions and pH
- Recombinant 'nanobodies', or antigen-binding single domain proteins are easily engineered from llama antibodies
- LAMPIRE can provide buffy coats and or RNA suitable for B-cell sorting, phage display or other downstream antibody production

Llama Whole Blood, Serum, Washed Cells & Plasma

LAMPIRE offers llama whole blood, serum, plasma and llama IgGs. LAMPIRE carries a line of non-conjugated and conjugated secondary llama antibodies for use in various applications.

Services Available:

- Buffy coats
- RNA isolation
- Downstream antibody production technologies
- Standard protocols or customized to meet your specific needs



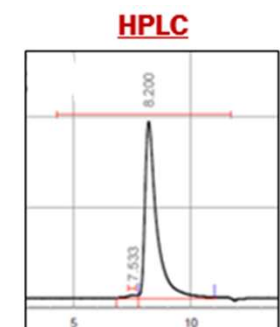
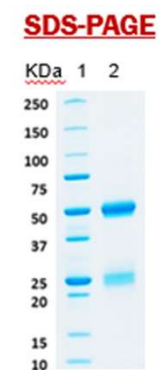
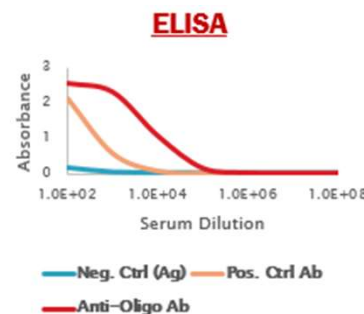
Oligonucleotide Antibodies @ LAMPIRE



Oligonucleotide Antibody Generation

Anti-sense therapies are a growing class of oligonucleotide-based therapeutics designed to treat a variety of diseases. Anti-oligonucleotide antibodies are frequently used to support drug development and monitor anti-sense drug levels. LAMPIRE actively supports these challenging programs with defined and effective protocols developed at LAMPIRE in both monoclonal and polyclonal projects. General strategies include:

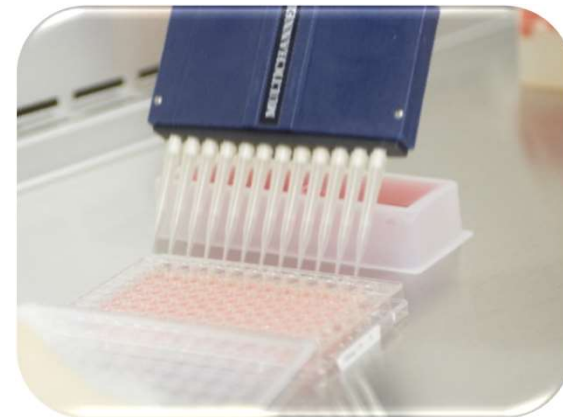
- Oligo conjugation to a variety of carrier molecules
- LAMPIRE's custom oligo immunization protocol
- Titer monitoring via ELISA
- Affinity purification using biotinylated material with Avidin resin coupling.



Custom Antibodies & Purification @ LAMPIRE

Custom Antibody Generation

- Experience with multiple antigen formats
 - Peptides, proteins, small molecules, nucleic acid oligos, antibody fragments, whole cells/cell lysates, and carbohydrates
 - Antigen design services
- Immunization Protocols
 - Multiple LAMPIRE standard protocols
 - Client provided protocols
 - Customized immunization protocols to match your antigen/ downstream application



Purification Optimization

- Customized Strategies
 - In house column preparation: Control orientation/presentation of antigen
 - Design custom purification strategies in collaboration with our clients
- Unique or difficult purifications:
 - Amino acid modifications (e.g. phospho-specific), anti-idiotypic
 - Purify against carbohydrates, steroids, oligonucleotides and whole cell antigens



Beyond the Laboratory

Sustaining the Future – Workforce Development

Leading the workforce development effort to grow interest in the Life Science Industry, turning today's students into tomorrow's experts.

2015 Education Workforce Leadership Award - Given by the PA Department of Education Development of an Education Industry Partnership in the Field of Biotechnology in conjunction with the Bedford County Technical Center.



Giving Back to the Community

Volunteering with multiple local organizations education and service organizations, Gregory F. Krug and LAMPIRE have a strong presence in the community.



2017 Bedford County Development Association Economic Development Award - Given for outstanding support of the economic development of Bedford County, Pennsylvania

2018 Ben Franklin iXchange Partnership Award - Given to an individual whose strong vision, dedication and commitment have helped Ben Franklin Technology Partners accomplish its goals

The LAMPIRE Advantage

Customer Focused: Technical Knowledge and Experience

More than 40 years of collaborating with the research, diagnostic and scientific industries worldwide. We work together with you from concept-to-completion. Our Project Management, Sales Associates, Customer Service Representatives and Technical Support personnel become part of your team.



World Class Specialized Facilities

State-of-the-art facilities designed with efficiencies and redundancies already in place to provide our expert techs every opportunity to make your project a success.

Quality Management System

Complete QMS Documentation System with certification to ISO 13485. In addition to AAALAC, OLAW, and continuous process improvement systems consistent with our Quality Policy.

Expansive Product and Service Offerings with Customization Available

One stop for all your research needs. Our quality products and services can be customized to meet your specifications.

Beyond the Laboratory

LAMPIRE employees are passionate. Passionate about education, family, and community.



PURIFIED PROTEINS & REAGENTS • CUSTOM ANTIBODIES • BSA • CELL CULTURE MEDIA • OMNI C3[®] CELL CULTURE BAGS • ANIMAL & HUMAN BLOOD PRODUCTS

LB
L

LAMPIRE
BIOLOGICAL LABORATORIES

