

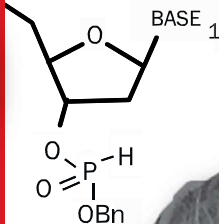


**LAMPIRE**  
BIOLOGICAL LABORATORIES

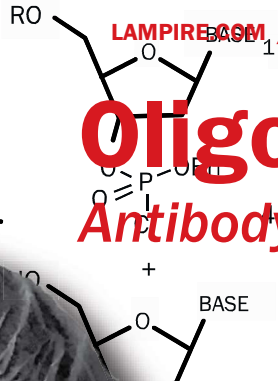
**45 YEARS STRONG**

LAMPIRE.COM / LAMPIRE@LAMPIRE.COM / (214) 795-2838

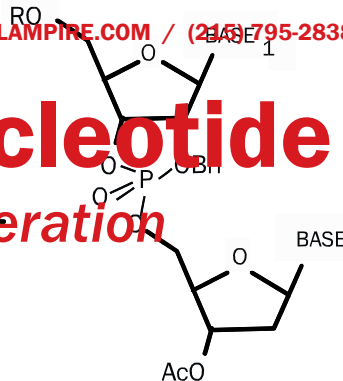
# Oligonucleotide Antibody-Generation



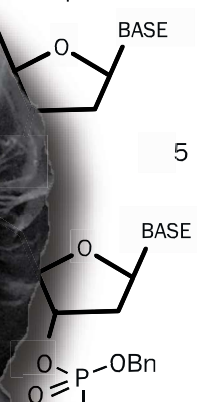
1



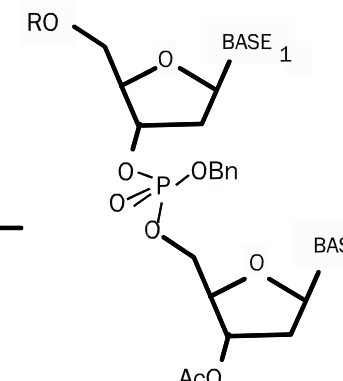
5



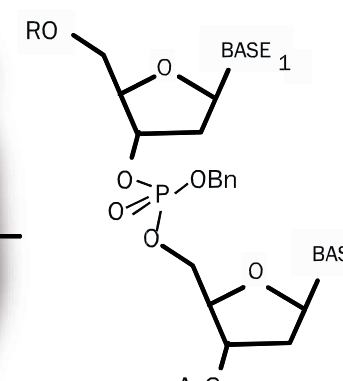
6



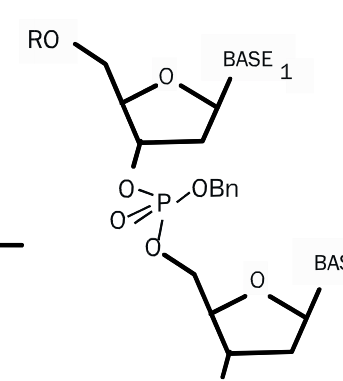
4



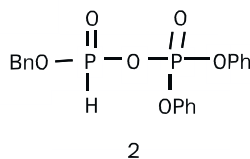
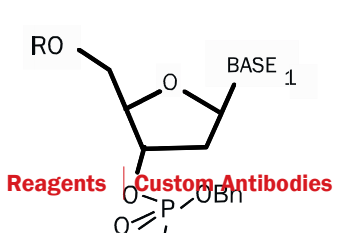
6



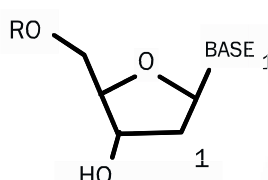
6



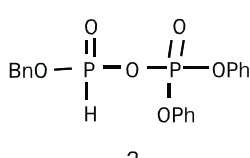
6



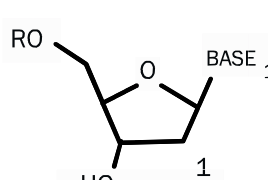
2



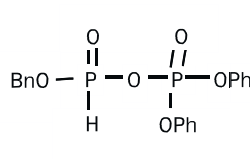
+



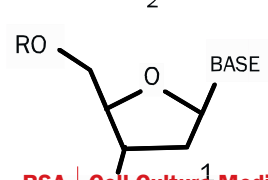
2



+



2

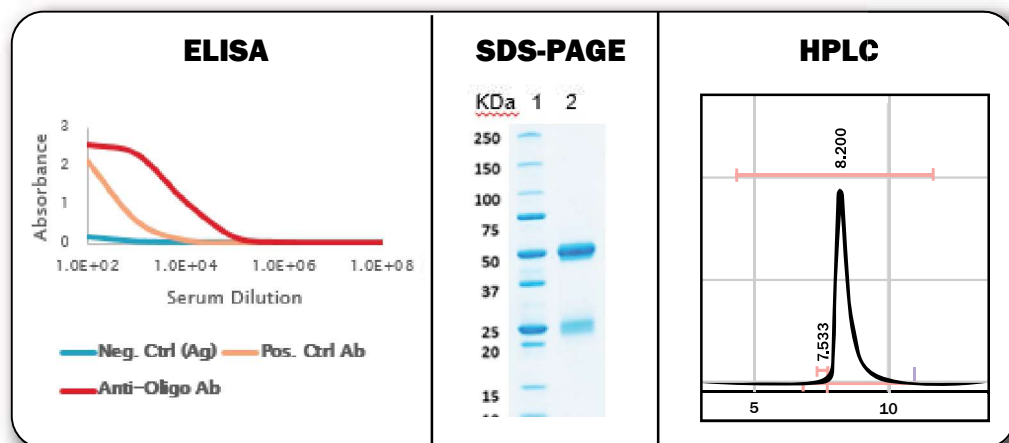


# Oligonucleotide Antibody Generation



- **10+ Years of Experience with this Immunogen Class**
- **Custom Affinity Purification Protocols**
- **Both Monoclonal & Polyclonal Projects**

Anti-sense therapies are a growing class of oligonucleotide-based therapeutics designed to treat a variety of diseases. Anti-oligonucleotide antibodies are frequently used to support drug development and monitor anti-sense drug levels. LAMPIRE actively supports these challenging programs by producing anti-oligonucleotide antibodies using LAMPIRE custom protocols.



## Lampire Custom Characterization Strategies

- Oligo conjugation to a variety of carrier molecules
- Custom oligo immunization protocols
- Titer monitoring via ELISA
- Strict adherence to immunization strategies
- High immunogenic response in animals
- High sensitivity and specificity
- Specific to downstream use
- Affinity purification using biotinylated material with Avidin resin coupling

## Applications

- Supports anti-sense RNA research and development
- Positive control reagents in ADA
- Drug development applications

## Contact Us

Website: [lampire.com](http://lampire.com)  
Email: [lampire@lampire.com](mailto:lampire@lampire.com)  
Ph: (215) 795-2838



## THE LAMPIRE ADVANTAGE!

- ✓ **Experienced** technical partner with over 45 years servicing the life science industry
- ✓ **Knowledgeable** and responsive sales / customer service staff
- ✓ **Competitive** pricing, from research sized to bulk quantities
- ✓ **Customizable** products available to meet your specifications